



Call CHARLIE



Real-Time Virtual Support Child Health Advice in Real-time Electronically (CHARLIE) is free and friendly and available to doctors, residents, nurses, midwives, nurse practitioners and other providers.



Ask a Question

Have a question about a neonatal, pediatric or teenage patient? Reach out anytime. CHARLIE is available 24/7.

Medication

Does your young patient need medication and you're not sure what dose to use? Consult with a CHARLIE Pediatrician for advice on medications.



Need a Full Consult?

When a pediatric patient presents at your rural site, you may want an immediate pediatric consult. CHARLIE Pediatricians are available via Zoom or — if you are at an FNHA nursing station — telehealth cart, to assist with this.

I want to call CHARLIE, what should I do?

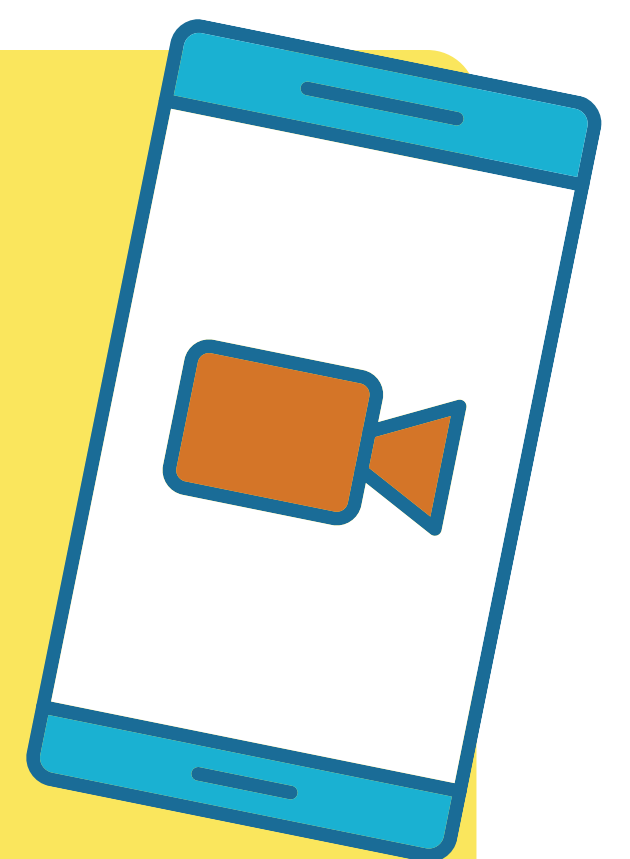
- Ideally, start a video call over Zoom or arrange to have CHARLIE call into your telehealth cart if you have one.
- Have the patient's name, PHN and DOB ready.



**Real-Time
Virtual Support**

We're Here For You

CHARLIE providers are passionate about providing pediatric care to rural, remote and Indigenous communities. Whether you are a nurse at a nursing station, midwife, nurse practitioner, resident or doctor serving a rural community, you are welcome to call.



CHARLIE: Add Zoom contact: charlie1@rccbc.ca | Phone: 236.305.5352

Visit rccbc.ca/initiatives/rtps/charlie for details or to get started.