



Call CHARLiE



Real-Time Virtual Support Child Health Advice in Real-time Electronically (CHARLiE) is free and friendly and available to physicians, residents, nurses, midwives, nurse practitioners and other providers.



Ask a question

Have a question about a neonatal, pediatric or teenage patient? Reach out anytime. CHARLiE is available 24/7.

Medication

Does your young patient need medication and you're not sure what dose to use? Consult with a CHARLiE Pediatrician for advice on medications.



Need a full consult?

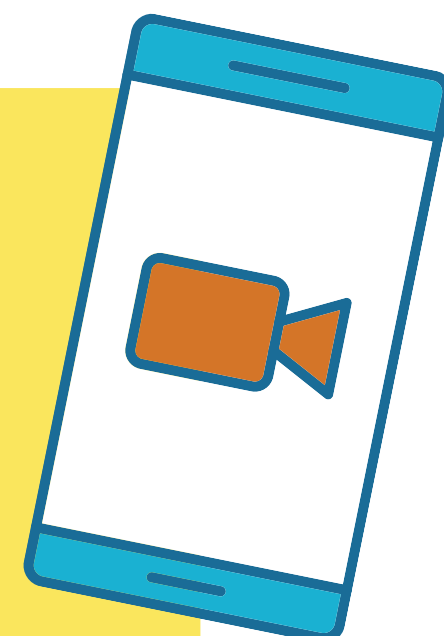
When a pediatric patient presents at your rural site, you may want an immediate pediatric consult. CHARLiE Pediatricians are available via Zoom or — if you are at an FNHA nursing station — telehealth cart, to assist with this.

I want to call CHARLiE, what should I do?

- Ideally, start a video call over Zoom or arrange to have CHARLiE call into your telehealth cart if you have one.
- Have the patient's name, PHN and DOB ready.

We're here for you

CHARLiE providers are passionate about providing pediatric care to rural, remote and Indigenous communities. Whether you are a nurse at a nursing station, midwife, nurse practitioner, resident or doctor serving a rural community, you are welcome to call.



SCAN ME



**Real-Time
Virtual Support**

CHARLiE: Add Zoom contact: charlie1@rccbc.ca | Phone: 236.305.5352

Visit rccbc.ca/initiatives/rtvs/charlie for details or to get started.